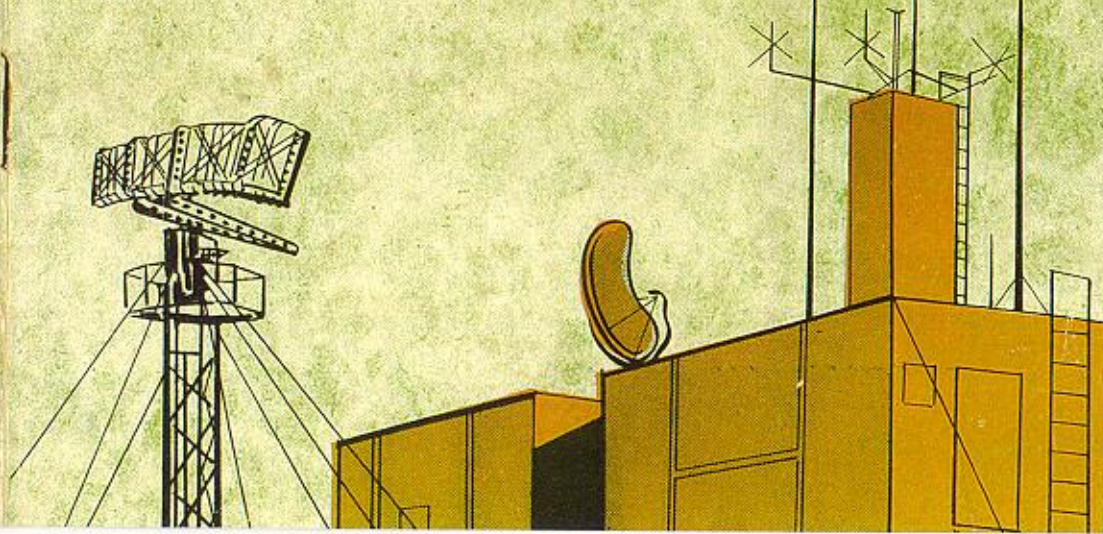
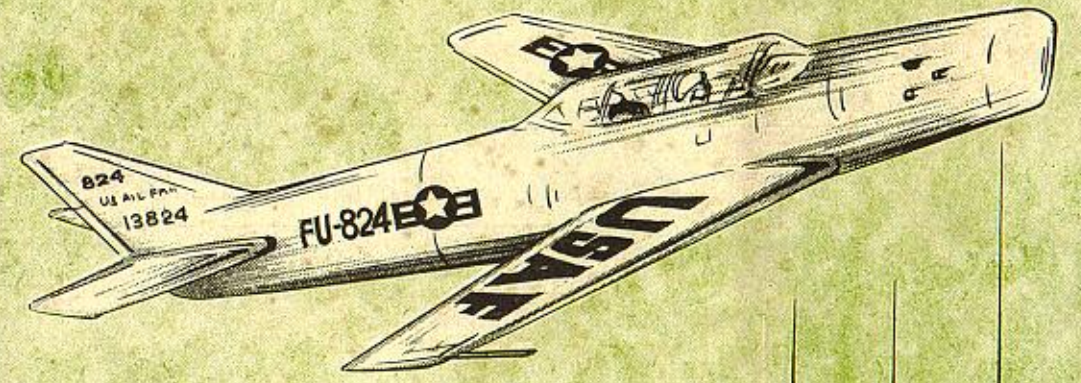
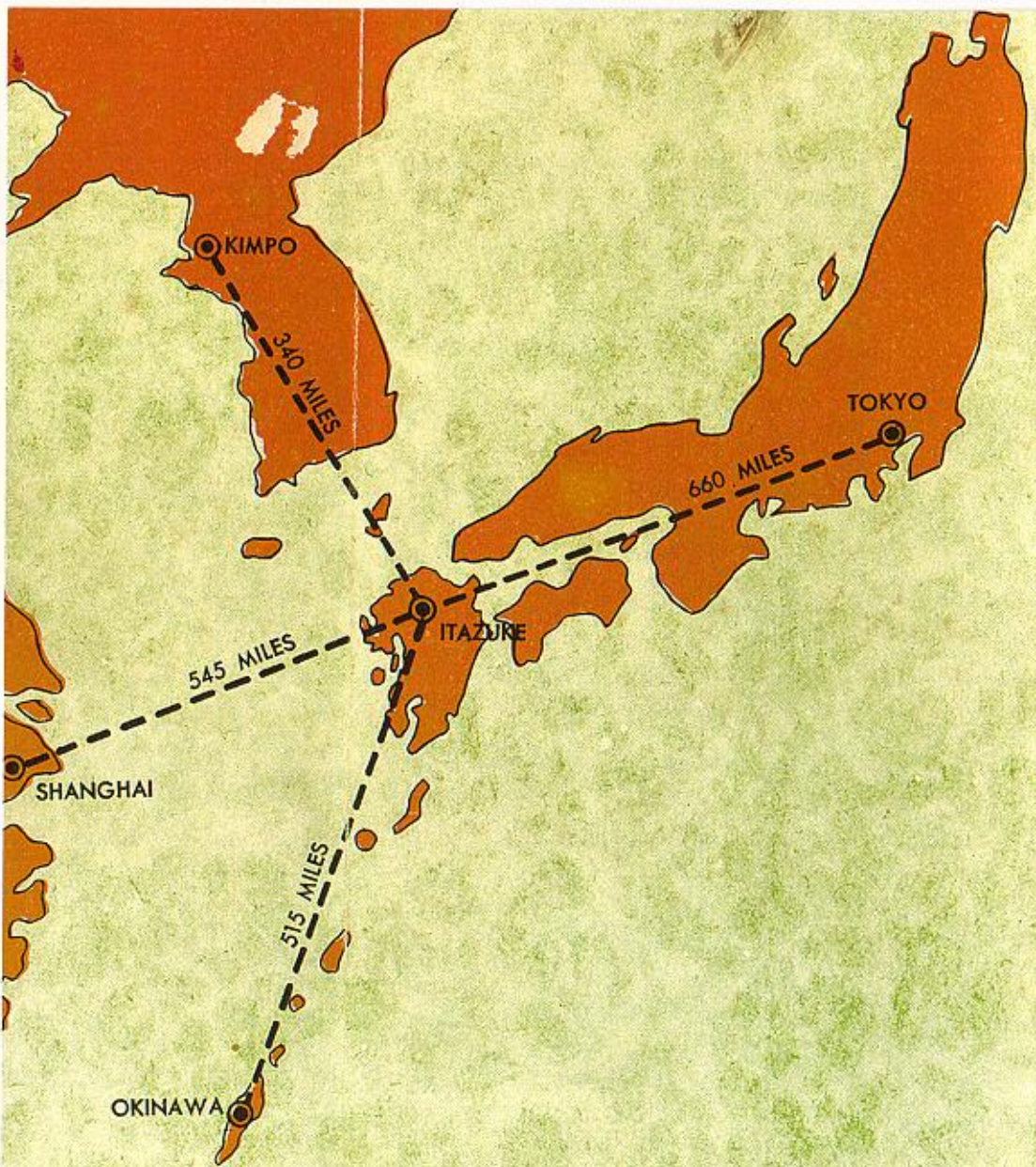


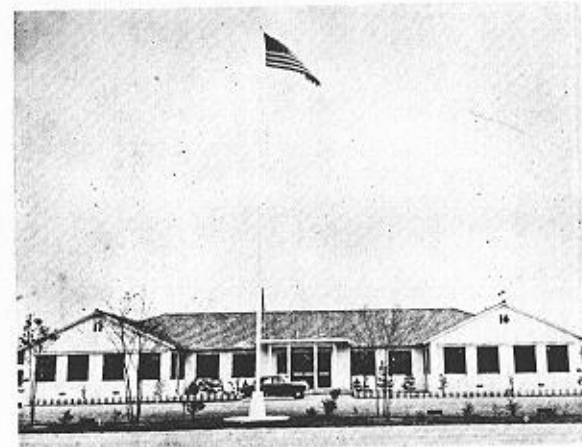
WELCOME TO ITAZUKE AIR BASE



CROSSROADS OF THE FAR EAST

Printed by Kaneko Printina Co., Fukuoka, Kyushu

HEADQUARTERS
8TH FIGHTER BOMBER WING
APO 244



This pamphlet was prepared and printed for your information and guidance by personnel of the Personnel Services Section, 8th Air Base Group.

A message from the Commander, Itazuke Air Base:

I take this opportunity to extend a sincere welcome to all newly arriving personnel at Itazuke Air Base.

We are proud of Itazuke and all organizations assigned and attached. At the outbreak of the Korean conflict, aircraft from this base flew combat missions against the enemy. We fully expect that all will live up to the honor brought to this base by those before us.

This booklet has been prepared to help you become acquainted with one of the finest Air Bases in Japan. It is my fond hope that your tour of duty here will be one to the most pleasant in your Service Career.

THE 43RD AIR DIVISION



The 43rd Air Division came into being March 1, 1952, as the operational control of all Aircraft Control and Warning units for Southern Japan. Its main mission was to coordinate the activities of the AC&W sites with Fighter Squadrons in this area.

On March 1, 1955, the reorganization of Fifth Air Force put the 43rd Air Division in complete control of all the units that were formerly under the 8th Fighter-Bomber Wing and the old 6160th Air Base Wing, plus absorbing the 527th AC&W Group.

At the present time, the 43rd Air Division has operational, as well as administrative, control of all units assigned or attached to Itazuke Air Base. The primary mission of the Division is the aerial defense of the southern sector of Japan and surrounding territory.

— INDEX —

THE 8TH FIGHTER BOMBER WING	1
HISTORY OF ITAZUKE AIR BASE	2
BASE LOCATOR FILE	3
BILLETING	4
DEPENDENT HOUSING	4
LAUNDRY AND DRY CLEANING	5
BASE TAXI AND BUS SERVICE	6
SERVICE CLUBS	6
MESSING FACILITIES	7
OPEN MESSES	8
WIVES CLUBS	9
YOUTH GROUPS	9
COMMISSARY	10
BASE EXCHANGE	10
BX CONCESSIONS	11
BEAUTY SHOP	11
BARBER SHOP	11
BOWLING	11
SNACK BARS	12
FINANCE	12
CURRENCY EXCHANGE FACILITIES	12
BANK	13
POST OFFICE	13
DEPENDENT SCHOOL	14
PARENT-TEACHERS' ASSOCIATION	14
THRIFT SHOP	15
AMATEUR RADIO STATION	15
COMMERCIAL TRANSPORTATION OFFICE	16
VEHICLE REGISTRATION PROCEDURES	16
BX GARAGE	16
TELEPHONE AND TELEGRAPH SERVICE	17
THE AMERICAN RED CROSS	17
CLOTHING SALES STORE	17
CHAPEL SERVICES	18
RELIGIOUS ORGANIZATIONS	19
CHOIRS	19
PERSONNEL SERVICES	20
HOBBY SHOPS	20
BASE NEWSPAPER	20
EDUCATION CENTER	21
SWIMMING POOL	21
LIBRARIES	21
THEATERS	22
AIR FORCE AID SOCIETY	22
ATHLETICS	23
MAP OF MAIN BASE	24
MAP OF ANNEX	Back Page

INTRODUCTION

Kyushu, the southern-most of the large islands of Japan, is a mountainous region dotted with volcano lakes, steaming sulphur springs and beautiful water falls. Interesting and historic attractions are numerous:— Mt. Aso, the largest active volcano in Japan;— Nagasaki, famous for the Atom Bomb, home of Madam Butterfly;— Beppu, largest hot springs area in Japan;— Karatsu, a beautiful resort by the sea;— Dazaifu Shrine at Futsukaichi and Unzen National Park. These places and many more are easily reached by train or automobile.

Now that you have a brief, over-all view of this picturesque island, let's take a look at your new station and see what it has to offer.

Itazuke, referred to as the Cross Roads of the Far East, is very unique in that the Air Base is divided into two component parts separated by a distance of approximately six miles. The Main Base is the center of all flight activities and the Annex is the housekeeping organization for both bases. Whether you work at the Main Base or at the Annex, you will soon realize how much Itazuke resembles a small American city in which every community service may be found. Such comforts as a large movie theatre, gymnasium, swimming pool, bowling alley, chapel, base exchange, commissary, post office, library, education center, dependent school, service club, hobby shop, amateur radio station and a complete banking system are offered to help make your tour at Itazuke a most pleasant one.

This booklet has been especially prepared for all newly assigned personnel at this headquarters. We hope you find it interesting, informative and beneficial.

THE 8TH FIGHTER BOMBER WING

"A mobile air-arm trained for tactical readiness either as support or long range escort, and capable of immediate movement to any area of disturbance"...that is the 8th Fighter Bomber Wing.

Now part of the 43d Air Division and 5th Air Force, and under the Far East Air Forces, the 8th Wing has a long, colorful history behind it, dating back to the First World War. The tactical component of the Wing, the Fighter Bomber Group, was activated 6 February 1918 at Camp Waco, Texas. They experienced their first combat in May 1918. In 1921, the "Air Force" was cut, and the 8th Pursuit Group, as it was then called, was deactivated.

In June 1932, under the newly formed Army Air Corps, formal activation ceremonies were held at Langley Field, Virginia, and the 8th again took to the air. In May 1935, Lt. Col. A. H. Gilkeson assumed command of the 8th Group. He remained at the controls for over three years, the longest period in the history of the Group under the same commander.

The 33d Squadron was pulled away from the 8th and transferred to Iceland in 1941. The 35th and 36th Squadrons, the only squadrons in the 8th, were undergoing extensive training when the Japanese bombed Pearl Harbor. By January 1942, the war plans of the United States had been determined, and the 80th Pursuit Squadron was placed in the 8th Group. With fighting now the prime objective, the unit was redesignated the 8th Fighter Group.

Wartime objectives of the 8th Fighter Group closely followed the progress of the Pacific War. Port Moresby, Nadzab, Owi, Zamboanga, the Philippines, Ie Shima, finally Japan. All the obstacles of war, inexperience, disease, lack of equipment and personnel— were encountered and overcome. An enviable combat record was established and a similar pattern was again followed in Korea.

Arriving in the Japanese home islands after the surrender, the members of the 8th Group went about establishing semi-permanent conditions at their new base, Ashiya Air Field, on the southern island of Kyushu. Here the 8th

Fighter Bomber Wing came into being on August 19, 1948. The wing moved to Itazuke Air Base in March of 1949 and assumed the role of an occupational group.

With the outbreak of hostilities in Korea in June 1950, the 8th Wing became the first aerial unit committed to action and the first American Jet Group to fly combat in any war.

By July 3, 1950, Communist tank-led columns were twelve miles south of Suwon, the recently-departed home of the 8th Wing, and American ground forces were racing to intercept the Reds.

After one week of war, the 8th Fighter-Bomber Wing was officially credited with destroying six enemy planes, while losing two planes and one pilot.

The code name of the 8th Wing, "Hobo", was acquired shortly after the start of the Korean War due to the Wing's five major moves during and immediately after the Korean War.

With the redeployment of the 8th back to Itazuke in October 1954, the 68th Fighter Interceptor Squadron was attached to the 8th thus making the Wing a more decisive air defense force as well as being a strong tactical offensive unit.

HISTORY OF ITAZUKE AIR BASE

In late 1944, the construction of Itazuke Air Base was completed on the site of Mushiroda Base, a former Japanese Army Air Force installation. The Japanese had built Mushiroda on rice paddy land purchased from the farmers. The base when under Japanese control housed the 6th Fighter Wing of the Japanese Air Force which was committed to the defense of southern Japan with 30 single fighters and a small number of twin engine reconnaissance aircraft.

In April 1945 the Tachiarai Air Strip at Kurume about 20 miles south of Itazuke was struck by American B-29's. The Japanese moved their bombers from Tachiarai to Itazuke and used Itazuke as their base of oper-

ations until the very last days of the war when Itazuke was destroyed by American B-29 bombers.

When the American occupational forces took over in October 1945, they found one hanger on the Main Base and only a small portion of the Annex in existence. The present Air Installations, Base Supply, and Motor Pool areas constituted the Annex and was called the Kasugabaru Branch of the Kokura Army Ordinance Depot. The balance of the present Annex was farm land.

The first American to arrive at Itazuke was Colonel McBride of the Army Engineers. He officially took the area over from the Japanese government. At that time, Itazuke Air Base consisted of Base One (Kasuga), Base Two (Camp Fukuoka) and the Air Strip. Base headquarters was located in building T-1. The 315th Composite Wing was the Air Force occupation unit assigned to Itazuke.

In March 1949 the 8th Fighter Bomber Wing replaced the 315th Composite Wing as the occupational force at Itazuke. The 8th remained at Itazuke until 26 June 1950, the start of the Korean conflict.

When the 8th Fighter Bomber Wing was transferred to Korea, the 8th Air Base Group took over the operation of the base and became the 6160th Air Base Wing in December 1950. Throughout 1951 and 1952, the 6160th supplied logistical support for other bases in the surrounding area and Korea. The Wing was also the housekeeping unit for Itazuke Air Base and the Annex. Construction of a new mess hall, BOQ's and Airmen billets, begun in 1953, was completed in the summer of 1954. In October 1954, the 8th Fighter Bomber Wing reassumed command of Itazuke and the 6160th Wing was deactivated.

BASE LOCATOR FILE

A file of all personnel assigned to the 8th Fighter Bomber Wing is maintained in the Wing Personnel Office. Telephone 66029 between 0730 and 1630 hours.

BILLETING

Bachelor Officer's Quarters (Officers and DAFCs):

The Main Base BOQ Office, serving both transient and permanently assigned officers, is located in Building T-2311, the first quonset hut beyond the Barrineau Officers' Club. The office is open 24 hours daily. There are about 40 beds for transients — telephone 67010.

On the Base Annex, both transient and permanently assigned officers and DAFCs apply at the Housing Office, Building T-150, located directly behind the Kasuga Officers' Club. Open 24 hours daily, there are about 150 spaces for transient personnel — the telephone number is 67036.

Enlisted Personnel Quarters:

Permanently stationed enlisted personnel are assigned quarters by their organization. Transient enlisted personnel are quartered in Building T-162 on the Base Annex — telephone 67061. The building is located next to the bus stop on the street leading to the East Gate. There are 200 spaces available.

DEPENDENT HOUSING

Dependent Housing arrangements are made through the Dependent Housing Section, Building T-150, directly behind the Kasuga Officers' Club. Office hours are 0730 to 1630 Monday through Saturday. Complete information is available at this office. Telephone 66048. There are 380 housing units on base and 396 off base units. Although off base units have various problems such as water, heating and transportation, most of these inadequacies can be overcome with the assistance of base facilities. Efforts toward additional approved off base housing units are being made by the



Base Housing and Rent Control Board. The waiting period for Government Quarters on the base varies from 15 to 19 months. There is a waiting period of 90 to 120 days for dependents joining a sponsor who has acquired a private rental off the base.

LAUNDRY AND DRY CLEANING

Occupants of BOQs on the Base Annex may turn in laundry and dry cleaning to the Billeting Office, building T-150, at any time during the week. Officers billeted at the Main Base turn in laundry and dry cleaning at the Billeting Office, building T-2311. Normally, four day service can be expected.

Airmen turn their laundry and dry cleaning in to their unit supply room on dates specified by that activity. Four day service is customary.

Dependent personnel turn in laundry and dry cleaning at the Base Laundry, building T-18, Monday through Friday from 0730 to 1630, and on Saturday from 0730 to 1200. Service is usually three days.

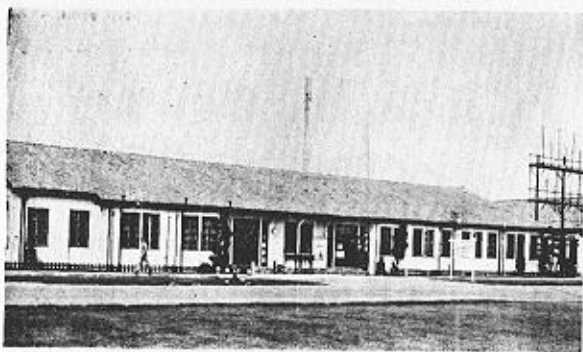
BASE TAXI AND BUS SERVICE



Itazuke Air Base provides shuttle buses for the convenience of all personnel. Bus schedules are conspicuously posted at bus stops and in orderly rooms. The Cosmopolitan and Star Taxi Corporations are the only taxi corporations authorized entry to Itazuke Air Base. Telephone Fuk-34564 for the Cosmopolitan taxi and

Fuk-31271 for the Star taxi; fares are paid in Japanese currency only. The Base operates a taxi service which may be hired for transportation on the Base and the Annex. The telephone number is 66669 and fares are paid in MPC.

SERVICE CLUBS



The Skyline Service Club is located in Building T-2127, at the Main Base. The Shooting Star Club is located in Building T-101, Base Annex. Dances and shows are among many of the popular attractions. Weekly tournaments in shuffleboard, ping pong, pinochle, pool, etc., together with regularly scheduled sight-seeing tours, and a program every night are part of a well rounded entertainment program. For further information call Skyline Service Club at 67118 or Shooting Star Service Club at 67108.

MESSING FACILITIES

Base Annex Officer's Field Ration Dining Hall, building T-151, serves meals as follows:

Breakfast	0600 to 0730
Lunch	1130 to 1300
Dinner	1700 to 1830
Sunday & Holiday Breakfast	0600 to 0800

The Main Base officer's field ration dining hall serves meals at the times indicated above.

Base Annex dining facilities for airmen are dining hall #1, building T-198 and dining hall #2, building T-199. Meals are served as follows.

<u>MEAL</u>	<u>MON THRU SAT</u>	<u>HOLIDAYS AND SUNDAYS</u>
Breakfast	0545 to 0715	0600 to 0800
Lunch	1100 to 1230	1100 to 1300
Dinner	1600 to 1800	1600 to 1800

Main Base Dining facilities for airmen are dining hall #4, building T-1934, and dining hall #6, building T-1944. Meals are served the same hours as indicate above.



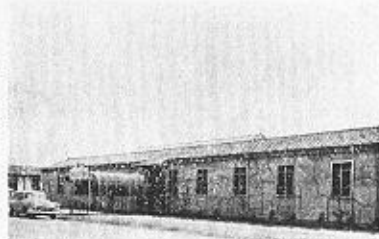


Officers' Club

OPEN MESSES



Zebra Club



Airmen's Club

The Open Messes on the Base Annex and the Main Base offer a wide variety of entertainment and excellent dancing facilities. Dancing, Bingo, Floor shows and bridge, are some of the many features. For information concerning weekly schedule, hours of operation, etc., contact the messes by the phone numbers listed below:

<u>BASE ANNEX</u>	<u>BUILDING NUMBER</u>	<u>TELEPHONE NUMBERS</u>	
Kasuga Officers' Open Mess	T-151	66446	66825
Zebra (NCO) Open Mess	T-185	66924	66453
Airmen's Open Mess	T-166	66635	66942

<u>MAIN BASE</u>	<u>BUILDING NUMBER</u>	<u>TELEPHONE NUMBERS</u>	
Officer's Open Mess	2161	66645	67077
Zebra (NCO) Open Mess	1569	66936	
Airmen's Open Mess	2365	66937	

WIVES CLUB

Officers' Wives Club membership is open to all wives of commissioned officers. Meetings are at 1300 on the first Tuesday of every month at the Officers' Club and consist of a luncheon, business meeting and entertainment program.

Membership to the NCO Wives Club, "the Zebraettes", is open to all wives of Non-commissioned Officers. Meetings are held every Friday at 1330 in the Zebra Club. The first Friday of each month is devoted to a business meeting.

YOUTH GROUPS

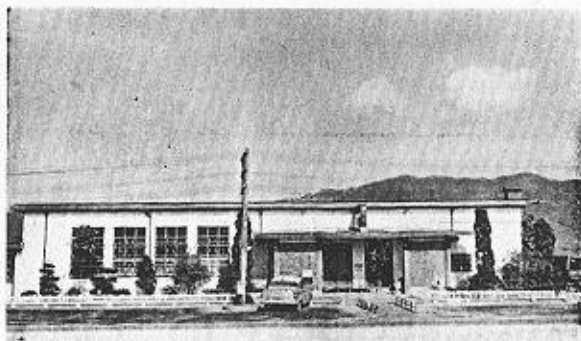


The Boy Scout Troop number 73 meets each Monday at 1900 at the Boy Scout building T-481B. The Cub Pack number 73 meets the last Friday of each month at 1900 in the Dependent School cafeteria. Den meetings are held Monday through Friday in the Boy Scout Building — T-481B at 1600 hours.

The Girl Scouts are composed of both the intermediate Scouts and the Brownies. The intermediate meet Monday, Thursday and Friday at 1500 hours in the Teenage Building T-148C. The Brownies meet at 1600 hours on Monday, Wednesday and Thursday in the Girl Scout Building T-2A.

The Base Teenage Club "Club Oriental" is open each Friday and Saturday evening from 1900 to 2200 hours.

COMMISSARY



Upon the assignment of dependent housing, a Commissary card will be issued to the family by the Commissary Officer. Located in building T-305 on the Annex, the Commissary is a scheduled bus stop. Store hours are 0800 to 1400 Monday through Friday and 0900 to 1500 on Saturdays. The Commissary offers a wide variety of canned goods, fresh meats, poultry, fruits and vegetables.

BASE EXCHANGE

The Base Exchange is located on the Base Annex with a sub branch at the Main Base. Both Exchanges are open daily from 1130 to 1730. Ration cards, obtained in your squadron, are necessary in purchasing such items as cigarettes, cameras, various electrical appliances and cosmetics.

BASE EXCHANGE CONCESSIONS

The concession building, T-197, located on the Base Annex is opened daily from 0900 to 1800. Many items and services are available such as: A tailor shop, souvenir section, watch repairing, photo developing, radio repairing, box wrapping, engraving, and shoe repair. It is suggested that the "souvenir minded" visit this shop before searching for souvenirs off base.

BEAUTY SHOP

A Beauty Shop for female military personnel and dependents is located in the Concession Building T-197. It is open daily from 0900 to 1800 hours. Appointments may be made by calling 66454.

BARBER SHOP

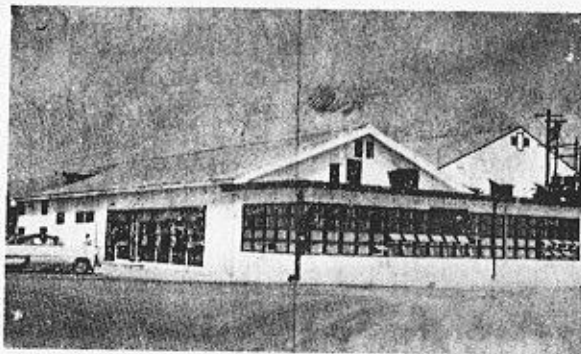
Officers and Airmen's Barber Shops on the Base Annex are open daily from 0900 to 1800. Both are located in the Concession Building, T-197. The Main Base Barber Shop, located in Building T-1914, services both officers and airman (open daily from 0900 to 1800 hours.)



BOWLING ALLEYS

The six alleys, under the supervision of the Base Exchange are located in Building T-11 on the Annex. Alleys are open week-days from 0830 to 2300 hours, Saturday and Sunday from 1000 to 2300 hours. Monday through Friday nights are reserved for league bowling. Bowling shoes are provided for use at no cost to the individual. Beer, soft drinks and candy are sold at the concession stand.

SNACK BARS



Three Snack Bars are operated by the Base Exchange for the convenience of Itazuke personnel. The Base Operations Snack Bar at the Main Base is open 24 hours daily. The Base Annex Snack Bar, Building T-202, and the Main Base Snack Bar, Building T-2127, are open daily from 0700 to 2230 hours.

FINANCE

The Finance Office is located in Building T-100, Rooms 108 and 110. The pay window is open 0800 to 1130 and from 1245 to 1530, Monday through Friday. Newly assigned personnel will not be paid until completely processed. Transient personnel may receive partial pay under emergency conditions.

CURRENCY EXCHANGE FACILITIES

Currency Exchange may be effected at the Base Annex Theatre, Finance Office, Chase Manhattan Bank, open messes and the Air Terminal during hours of operation. Exchange of currency through unauthorized sources is prohibited by regulations. Personnel should acquaint themselves with these regulations at their Squadron Orderly Room at the earliest possible date.

BANK

This base is served by the Chase Manhattan Bank of the City of New York, Tokyo Branch, Itazuke Office. Facilities include both checking and savings accounts. Business hours are from 1000 until 1500 Monday through Friday. The bank is located in building T-1A, Base Annex and telephone 66911.

POST OFFICE



The main post office (Bldg T-216) Base Annex is open Monday through Saturday from 0800 to 1600. The money order and registered mail windows close promptly at 1600. Regular mail and packages are dispatched daily on the 1930 train for Tokyo. A customs declaration must be attached to all packages mailed outside of Japan. The declaration may be obtained and certified by your squadron adjutant. The post office at the Main Base (Bldg T-1684) is open daily except Sunday. The money order and registry windows close at 1600.

DEPENDENT SCHOOL



Located on the Annex in building T-450, adjacent to the old dependent housing area, this modern grade and high school offers American children a complete and well-rounded educational program. In addition, an accredited Kindergarten is available for the young tots. For information regarding school registration, tuition, scholastic requirements, the PTA and the school board, contact the school principal or secretary at 66228.

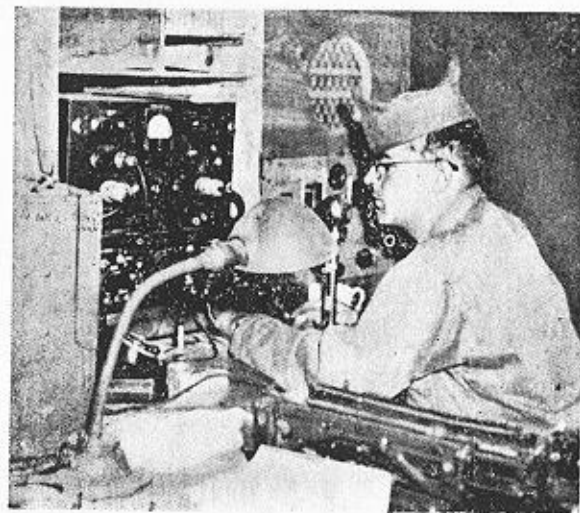
PARENT-TEACHERS' ASSOCIATION

The base Parent-Teacher Association is open to parents of all children on the base. There are no membership dues. Meetings are usually held on the second Tuesday of each month. School board members are elected by the PTA. All parents of school age children, Kindergarten through the 12th grade are strongly urged to participate in PTA.

THRIFT SHOP

The Thrift Shop, sponsored by the PTA, provides an excellent outlet for new and used items such as furniture, clothing, cameras, toys, radios, bicycles, and appliances. If you are in the market to buy or sell, be sure to visit the Thrift Shop in building T-453 on the Annex, or telephone 67303. Hours of operation are 0930 to 1130 Monday through Friday.

AMATEUR RADIO STATION



The Military Amateur Radio Station (MARS) was established to further the interest of amateur operators in the military service. Personnel manning the station do so on a voluntary basis during off-duty hours. Contacts are made daily to many parts of the world. Perhaps you would like to send a short message home. If conditions are favorable, our "Ham" operators may be able to set a "phone patch" with your wife, sweetheart or family. It may be worth your while to visit the station. The location is building T-178B on the Annex — telephone 66041.

COMMERCIAL TRANSPORTATION OFFICE

Arrangements for Government-financed travel and shipment of personal property can be made with the Commercial Transportation Office upon presentation of orders. Inquiries should be made as follows:

Passenger Travel	67026
Freight	67026
Personal Property	67272
Travel Agents	66939 (Japan Travel Bureau) 66949 (Kei-Han-Shin Air & Sea Serv)

Questions and complaints covering shipment of baggage, house-hold goods and privately owned automobiles should be directed to the Personal Property Section of the Commercial Transportation Office, Phone 66272. Do not call concerning delayed hold baggage until 2 weeks after your arrival on the base. You will be notified when your baggage arrives.

Upon your return to the ZI, the Commercial Transportation Office handles the shipment of all your personal property to your destination. Various information sheets on transportation problems are available at the Commercial Transportation Office at your request.

VEHICLE REGISTRATION PROCEDURES

The procedures for registering a motor vehicle is initiated at the Pass and Registration Section, Building T-6. A request for registration is filled out and submitted to the Land Transportation Office in Fukuoka. The owner will pick up the Japanese Registry Papers and license plates and pay the required fees. The registry papers are then taken back to Pass and Registration together with proof of Liability Insurance. The owner will receive the necessary FEC Form and instructions for their display and use.

BASE EXCHANGE GARAGE

The Base Exchange Garage is located on the Base Annex in Building T-219. The hours are 0900 to 1800, Monday through Saturday. The service

available includes complete overhauls, body and fender work, painting, wheel alignment, washing, greasing, etc. Service is good and prices are reasonable.

TELEPHONE AND TELEGRAPH SERVICE

Overseas telephone and telegraph service is offered in the Shooting Star Service Club, Building T-101 on the Base Annex from 0900 to 1800 hours daily, except on Monday. Rates for overseas telephone calls are \$4.00 per minute during week days and \$3.00 per minute on Sunday, payable in Yen. A delay of 4 to 6 hours may be expected. Telegraph service is at the rate of 124 Yen per word for first class service and minimum charge for 22 words is 1364 Yen for second class service. Telephone and Telegraph offices will be closed on Mondays, calls may be made by contacting DAFC's on duty at either Shooting Star or Skyline Service Clubs.

THE AMERICAN RED CROSS

The Field Director's Office is open Monday through Friday from 0730 to 1600 hours and on Saturdays from 0730 to 1200. After duty hours, weekends and holidays, dial the Chief Operator for the Red Cross duty worker.

The Red Cross social service program consists of counseling on finances, personal and family problems. Assistance is given in reestablishing communications between service personnel and their families. Reports are obtained to assist service personnel and military authorities with requests for emergency leave and hardship discharge. The Red Cross is here to assist you. Phone 66521 or 66920 or visit their office building T-163.

CLOTHING SALES STORE

Air Force personnel may purchase uniforms, overcoats, shirts, socks, shorts, shoes, insignia and ties from the Clothing Sales Store, in building T-25, Base Annex. The store is open Monday through Friday from 0800 to 1600 hours and on Saturday from 0815 to 1130 hours. Telephone 66157.

CHAPEL SERVICES

Attend the Religious Service of your choice.

Base Annex Chapel — Building T-103

PROTESTANT

Sunday School (Dependent School)
0930 hours
Sunday Worship 1000 & 1100 hours
Religious Film — Monday 1930 hours
Male Glee Club — Monday
2000 hours
Bible Study — Tuesday 1900 hours
Choir Practice — Tuesday 2000 hours
Gospel Hour — Thursday 1930 hours
Christian Science — Sunday
1800 hours
Latter Day Saints — Sunday
1400 hours



CATHOLIC

Sunday Mass — 0830 & 1230 hours
Weekday Mass 1210 hours
Novena — Wednesday 1900 hours
(Confession heard before each Mass) Rosary — Saturday — 1900 hours

JEWISH

Friday Evening Service

MAIN BASE CHAPEL — BUILDING 2120

PROTESTANT

Sunday Worship 0930 & 1030 hours
Sunday Vespers 1900 hours
Bible Study — Wednesday 1900 hours
Crash Boat Service — Sunday 1730 hours

CATHOLIC

Sunday Mass 0800 & 1145 hours
Weekday Mass 1715 hours
Sunday Mass (Crash Boat Section) 1000 hours

Confessions heard before each Mass from 1730 to 1900 hours, Saturday.

Chaplain (Catholic) 67003
Chaplain (Protestant) 66219
Chaplain (Main Base) 66363

RELIGIOUS ORGANIZATIONS

The Protestant Women's Fellowship meets in the Base Chapel on the Second Monday of each month at 1400 hours.

The Catholic Women's Club meets every Thursday in various homes as designated.

The Holy Name Society (Communion) meets the second Sunday of each month in the Chapel at 0900 hours.

The Japanese Catechism class (1800) and the Catechism class for dependent children (1930) meet at the Chapel on Monday of each week.

The Japanese Protestant Sunday School meets at 0930 on Sundays and the Japanese Protestant Service is at 2000 on Fridays in the Base Chapel.

The Jewish Chaplain may be contacted for information concerning social activities for those of Jewish Faith by telephoning 66219 or 67003.

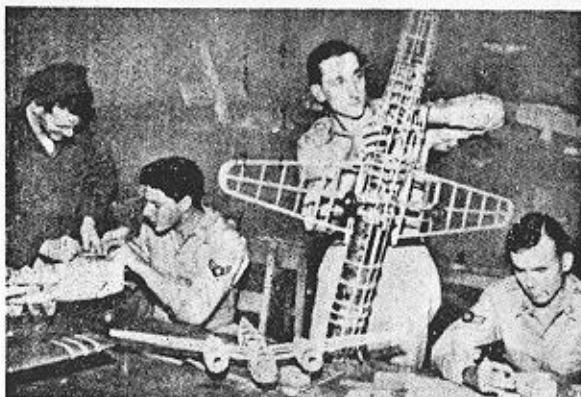
CHOIRS

The Chapel Choir rehearses at 2000 hours every Tuesday in the Base Chapel choir loft. The Junior Choir rehearses at 1900 hour every Monday in the Base Chapel choir loft.

PERSONNEL SERVICES

The Personnel Services program provides Air Force personnel a combination of programs designed to meet their personal, educational, recreational, social, cultural and general welfare needs. For information concerning athletic events, USO shows, hotel reservation and recreational activities, contact the office in building T-1 or telephone 66339.

HOBBY SHOPS



The Annex Hobby Shop, building T-101, is open daily from 1300 to 2200. Facilities available include photography, leather craft, model building and various other crafts. Necessary supplies may be purchased at the Hobby Shop. The Main Base Hobby Shop, building T-556, is open from 0900 to 2100 on Monday, Wednesday, Thursday, and Friday and Saturday. It is open from 1200 to 2100 on Sunday and 0900 to 1800 on Tuesday.

BASE NEWSPAPER

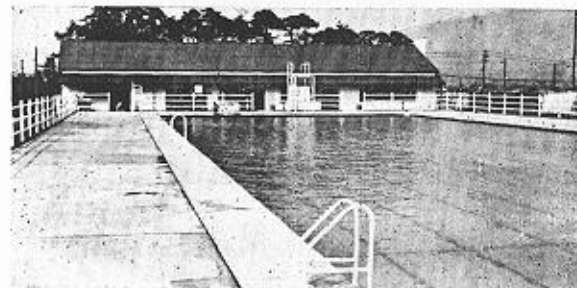
"Plane Talk" the Itazuke base newspaper, is a very good source of information on all topics of interest. The newspaper staff welcomes any news that will be of interest to base personnel. You may visit their office which is located in building T-1, Base Annex, or telephone them at 67409.

EDUCATION CENTER

In keeping with the Air Force policy of maintaining a high intellectual level, this office offers a diversified education program to meet the needs of the personnel of this Base. Up to 90 semester hours of credit may be earned by the ambitious individual during his tour of duty overseas by successfully completing courses offered by University of California, Group Study Classes and certain USAFI courses. Servicemen may take the High School Level GED test, and may receive a High School Equivalency Certificate. The Education Center also administers College GED tests, End of Course tests and subject examinations.

To further your education, visit your Education Center at the Base Annex in Building T-163 or phone 67046.

SWIMMING POOL



Open from July until September, this fifty meter pool is the place to visit for comfort' relaxation and a good "sun-tan". The modern Club House has an excellent Snack Bar operated during months the swimming pool is open. This activity is directly across the street from the new dependent housing area. For further information, call 66339 or 67249.

LIBRARIES

For your reading pleasure, the Annex Library offers over 10,000 volumes of books and many of the latest magazines, periodicals and newspapers

from the States. The Base Annex Library is in Building T-197. Hours are 0800 to 2130 daily, including holidays. The Branch Library on the Main Base is in the Skyline Service Club, Building T-2127. Hours are 0800 to 2200 hours, seven days a week.

THEATERS



The Kasuga theater on the Annex, building T-203, offers two shows nightly at 1800 and 2000 hours. Matinees on Saturday and Sunday at 1400 hours.

The Barrineau theater located in building 2352 on the Main Base has three presentations daily—1330, 1830 and 2030 hours.

Admission to both theaters is 25 cents for adults and 12 cents for children under 12 years of age.

AIR FORCE AID SOCIETY

The Air Force Aid Society, located in room 127 of building T-1, is your assurance of assistance in time of emergency. Financial assistance is rendered to Air Force personnel and their dependents who are faced with an emergency. Some of the types of cases assigned are; Non-receipt of pay or family allowances, Expenses incidental to emergency leaves, Emergency

medical expense, Payment of rent to prevent eviction or to obtain initial housing, Purchase of emergency food supplies, Assistance to dependents upon the death of Air Force personnel, Limited assistance for funeral expenses, Emergency transportation of dependents, Training of dependents of deceased Air Force personnel to enable them to become self-supporting and to assist dependent children of Air Force personnel to obtain education above the high school level. Acquaint yourself with the Air Force Aid Society—it's YOUR Aid Society.

ATHLETICS

Athletic activities at Itazuke include all major sports and most minor sports. The athletic program is supported by a gymnasium which houses a basketball court, boxing equipment and weights. Equipment is available on a temporary loan basis. The gymnasium is located in building T-205, and is open from 1000 to 2200 daily. The telephone number is 66320.



All personnel are invited to actively participate in the athletic program.



MAIN BASE

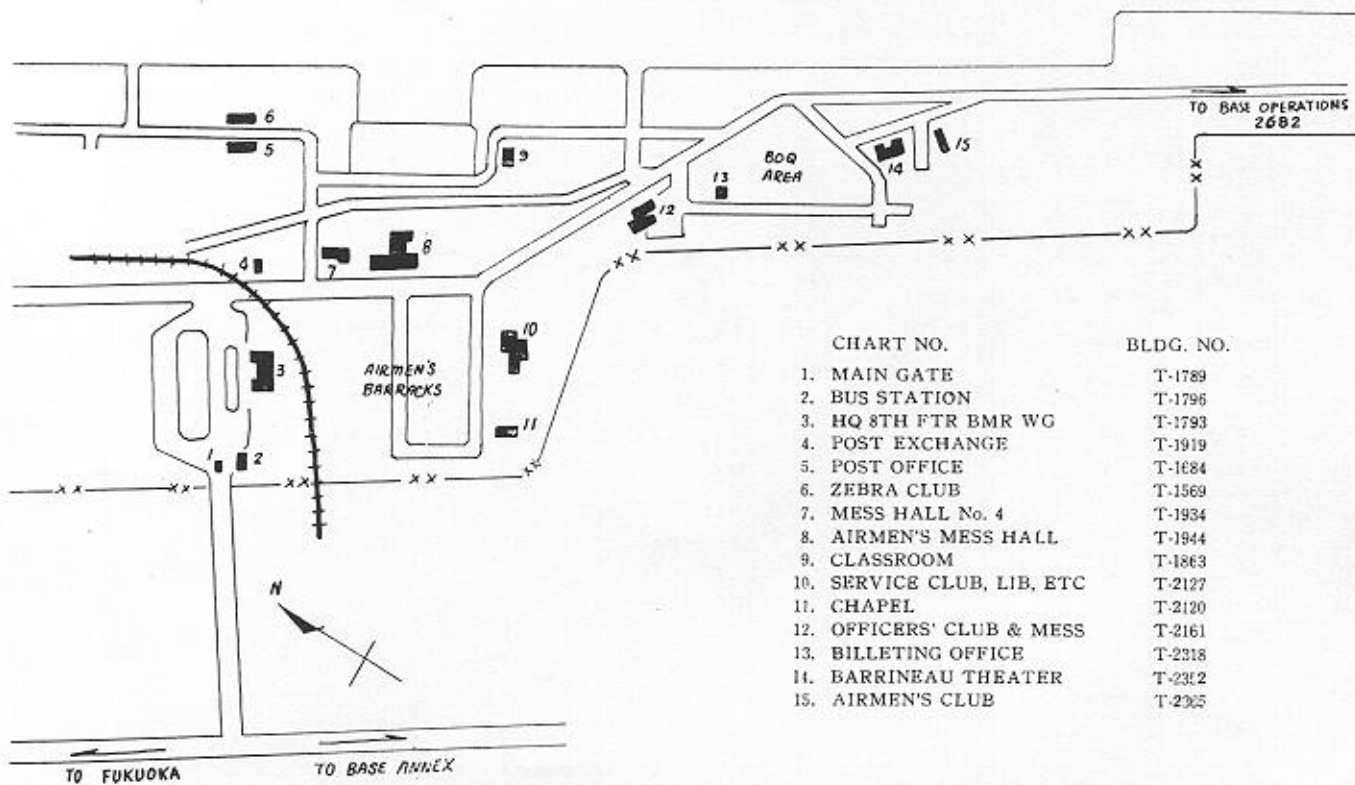


CHART NO.

BLDG. NO.

1. MAIN GATE	T-1789
2. BUS STATION	T-1796
3. HQ 8TH FTR BMR WG	T-1793
4. POST EXCHANGE	T-1919
5. POST OFFICE	T-1684
6. ZEBRA CLUB	T-1569
7. MESS HALL No. 4	T-1934
8. AIRMEN'S MESS HALL	T-1944
9. CLASSROOM	T-1863
10. SERVICE CLUB, LIB, ETC	T-2127
11. CHAPEL	T-2120
12. OFFICERS' CLUB & MESS	T-2161
13. BILETING OFFICE	T-2318
14. BARRINEAU THEATER	T-2312
15. AIRMEN'S CLUB	T-2325

BASE ANNEX

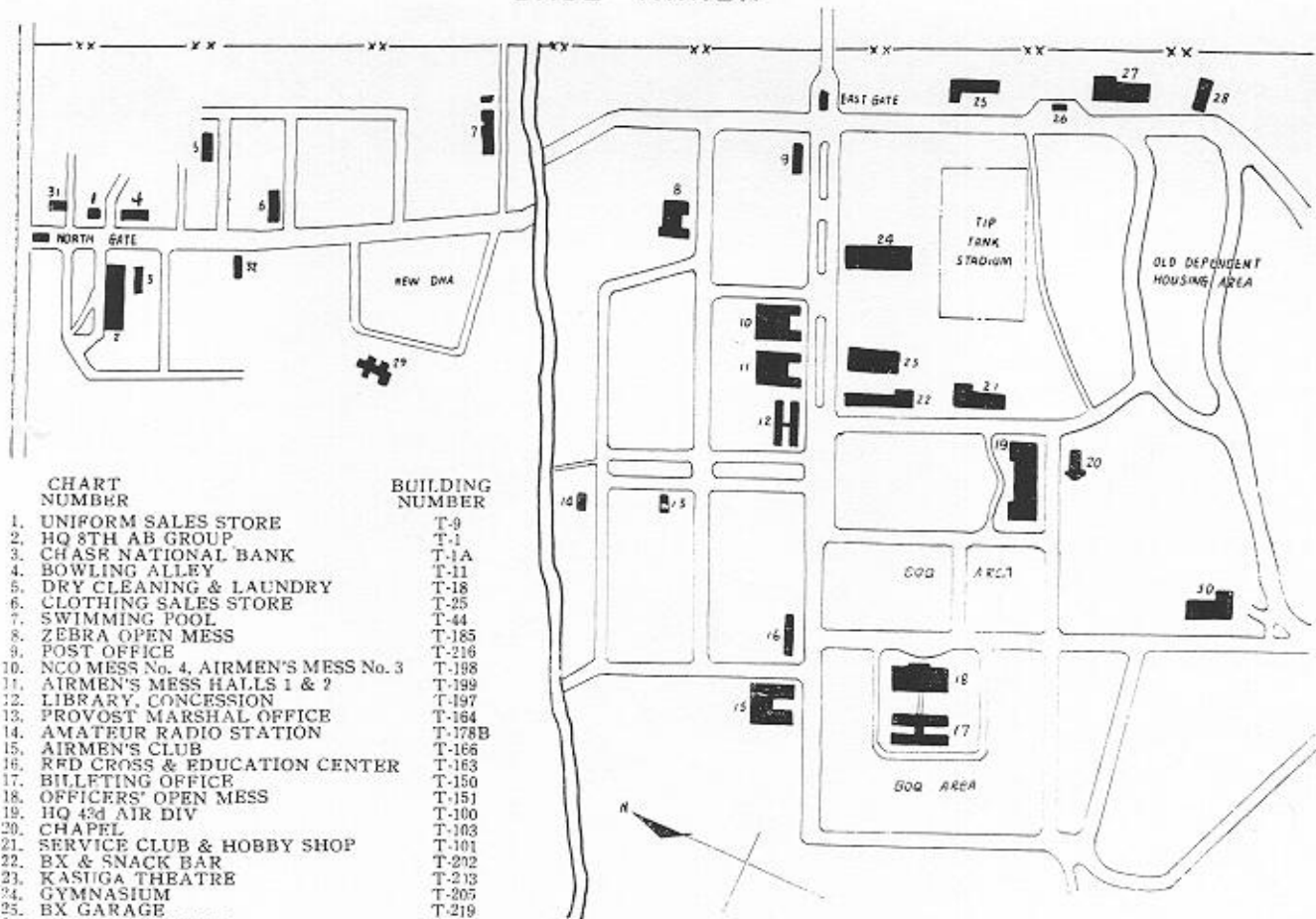


CHART NUMBER	BUILDING NUMBER
1. UNIFORM SALES STORE	T-9
2. HQ 8TH AB GROUP	T-1
3. CHASE NATIONAL BANK	T-1A
4. BOWLING ALLEY	T-11
5. DRY CLEANING & LAUNDRY	T-18
6. CLOTHING SALES STORE	T-25
7. SWIMMING POOL	T-44
8. ZEBRA OPEN MESS	T-185
9. POST OFFICE	T-216
10. NCO MESS No. 4, AIRMEN'S MESS No. 3	T-198
11. AIRMEN'S MESS HALLS 1 & 2	T-199
12. LIBRARY, CONCESSION	T-197
13. PROVOST MARSHAL OFFICE	T-164
14. AMATEUR RADIO STATION	T-178B
15. AIRMEN'S CLUB	T-166
16. RFD CROSS & EDUCATION CENTER	T-163
17. BILLETING OFFICE	T-150
18. OFFICERS' OPEN MESS	T-151
19. HQ 43d AIR DIV	T-100
20. CHAPEL	T-103
21. SERVICE CLUB & HOBBY SHOP	T-101
22. BX & SNACK BAR	T-202
23. KASUGA THEATRE	T-213
24. GYMNASIUM	T-205
25. BX GARAGE	T-219
26. SERVICE STATION	T-481
27. COMMISSARY	T-305
28. THRIFT SHOP	T-453
29. HOSPITAL	T-750
30. DEPENDENT SCHOOL	T-450
31. VEHICLE PASS & REGISTRATION	T-6
32. COMMERCIAL TRANSPORTATION	T-20