



E. CASHMAN,  
DIST. 9547

IN

OUT



FAR EAST NETWORK  
KYUSHU

ITAZUKI 1550 KC

SAGAMI 1570 KC

KOJIMA 1530 KC





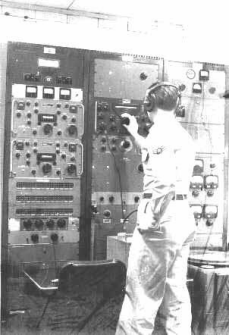






Western Electric Controlboard











Typhoon 1957



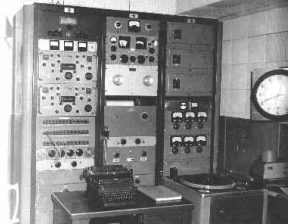


LIAISON  
SECTION

FEN

FAR  
EAST  
NETWORK

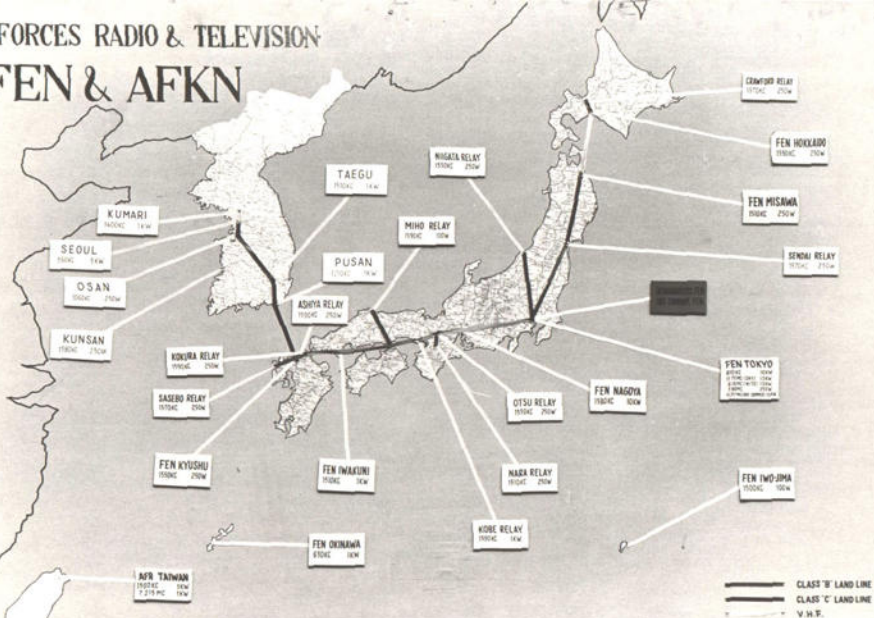






# ARMED FORCES RADIO & TELEVISION

## FEN & AFKN



# EAST NETWORK KYUSHU

ITAZUKE 1550 KC  
1570 KC

KOKURA 1590 KC



















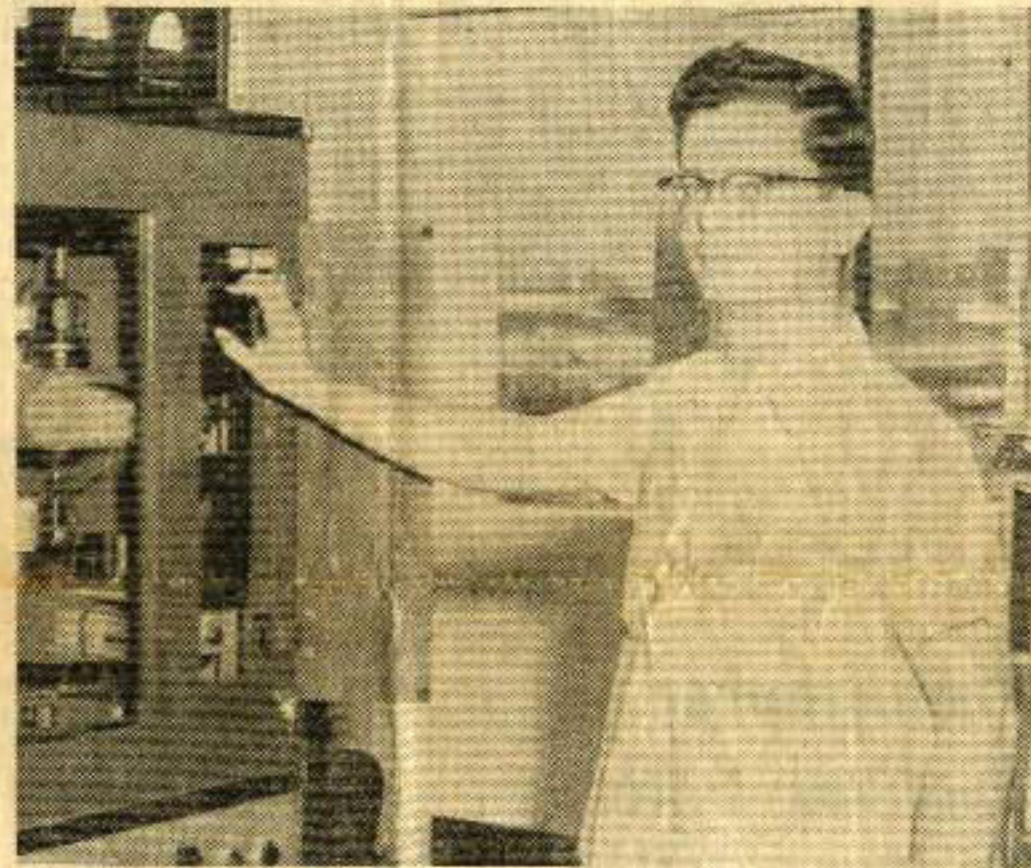
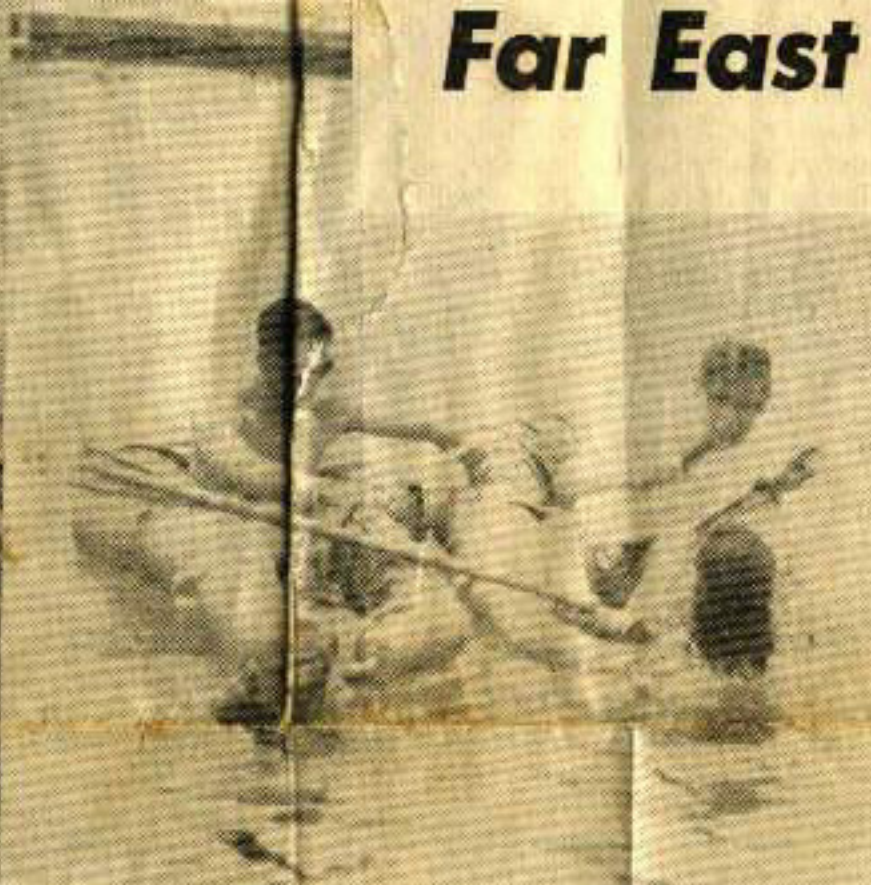








# Far East Network, Kyushu



Many "firsts" have been inaugurated at the Itazuke-based station. One of the highlights of this year's Armed Forces Day program was an interview with two F-100 pilots while in flight via short wave. At left Karin Martin talks with one of the pilots, 1st Lt. William McBride. At right, during the regular Saturday "Teenagers on Parade" a unique broadcast was made from rafts in the base swimming pool with emcees Mike Thompson and Karin Martin interviewing swimmers.

The station engineer at Far East Network, Kyushu is Mr. Robert W. Houston who has been with the station since its inception.



# Four Years At Itazuke



On the spot newscovering of disasters within their area of responsibility is all in a day's work for members of FFN, Kyushu. Here A/2C Hank Schutzbier interviews Mr. Harrell Shorrock, a member of the Church World Service relief team sent here during the recent Kyushu floods. Other members of FEN, Kyushu were at the flood site relaying news releases.



Important news at Itazuke Air Base has always been aired from the local Far East Network station. The opening of the renovated base theater is being broadcast by (left) M/Sgt. Jerry Posey and Sgt. Vince DeRose. Attending dignitaries are (l to r), Colonel Frederick M. O'Neill, Base Commander, Colonel Ladson G. Eskridge, Jr., 43rd Air Division Commander and Mrs. Eskridge.



**Station Manager, 1st Lt. Donald H. Roth, center, celebrated a milestone in FEN, Kyushu broadcasting with the first anniversary of the "Wilma the Weather WAF" program. "Wilma", 1st Lt. Joyce Harris, is shown with her commander, Lt. Col. Oscar H. True.**



岸  
信  
介

鈴木宗十郎



FEN - Schutzbier at his desk.jpg  
FEN Front Office-1.jpg  
FEN Kyushu Sound Studios.jpg  
FEN Main Console at Night.jpg  
FEN Network Map.jpg  
FEN Outside the Studio Broadcast-5.jpg  
FEN Recording Studio.jpg  
FEN Schutzbier DJing.JPG  
FEN - 24 hr Duty For Typhoon.jpg  
FEN Schutzbier Interviewing Int'l Red Cross Donor-1.jpg  
FEN Schutzbier interviewing relief donor Isahaya flood.JPG  
FEN Schutzbier Monitoring Short Wave.jpg  
FEN Schutzbier On Main Console.jpg  
FEN Schutzbier Preparing Music Requests.jpg  
FEN Schutzbier with cast of Teens On Parade - Sarah on left.jpg  
FEN TEENAGERS - performing on radio.JPG  
FEN View of Monitoring and Control Bays.jpg  
FEN-Kyushu-Studios-building-10.jpg  
Saturday Zebra Club Remote-1.jpg  
Saturday Zebra Club Remote-2.jpg  
Saturday Zebra Club Remote-3.jpg  
Bill Hoffmeyer aka Liam Kingsmill 1959\_fen-5.jpg  
FEN Bill Hoffmeyer doing Rise and Shine Outside.jpg  
FEN Bill Hoffmeyer.jpg  
FEN Kyushu Station - Mr Hidaka Engr.jpg  
Hamamura Michiko-1959 Interview-1 - Banana Boat Girl at Takarazuka theater Fukuoka.jpg  
Hamamura Michiko-1959 Interview-2 - Banana Boat Girl at Takarazuka theater Fukuoka.jpg  
Jane Mansfield arriving for USO Show\_schutzbier\_uso-4.jpg  
Jane Mansfield USO Show.jpg  
Jane Mansfield\_BHSHOW1.JPG  
Jerry Colona and Les Brown at USO.jpg  
FEN Itazuke newspr1a.jpg  
FEN Itazuke newspr2a.jpg  
FEN Itazuke newspr3a.jpg  
N-Kishi-S-Yagi-Schutzbier-circa1983.jpg  
SHIRAKIBARU\_MARKET.JPG