

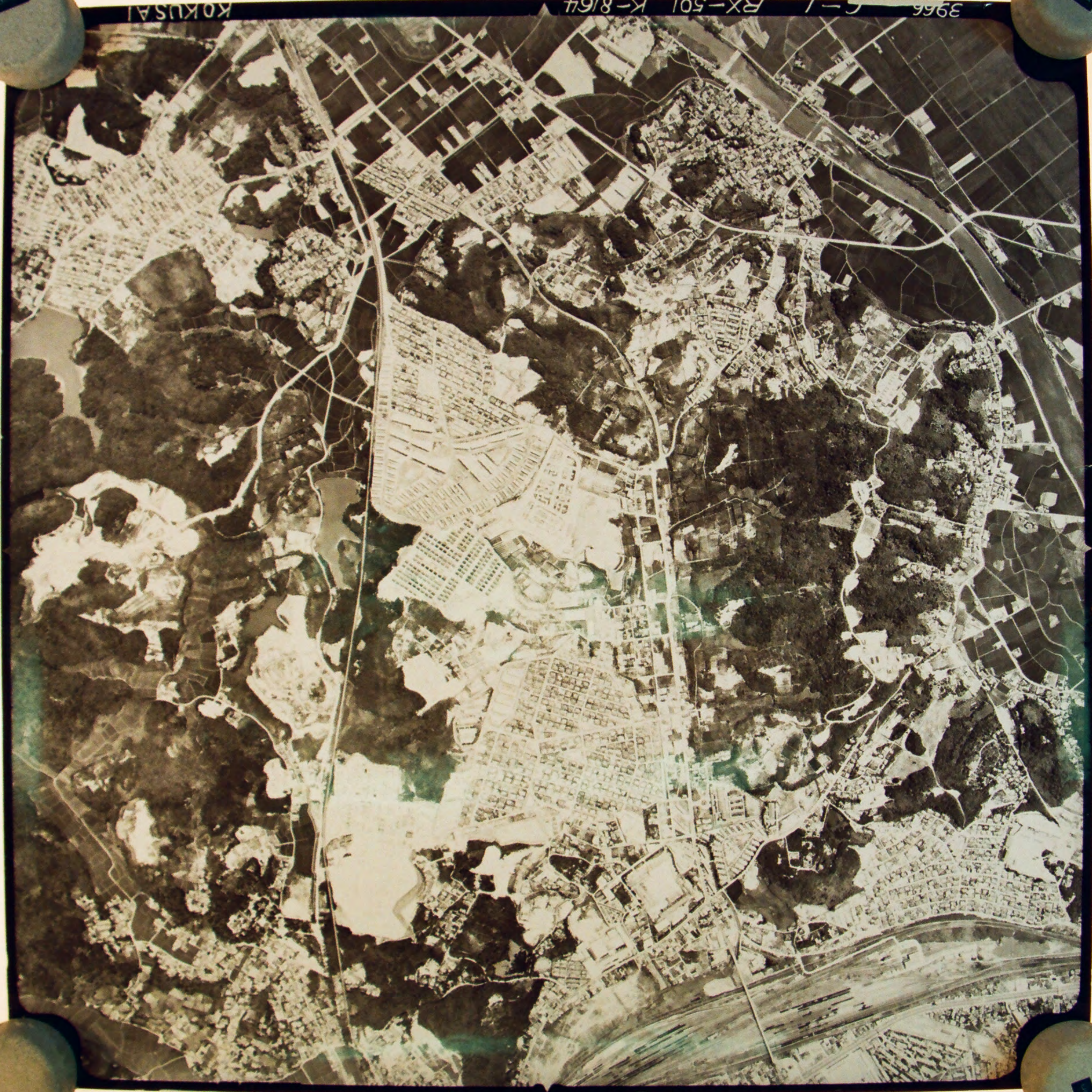






35th TACTICAL FIGHTER SQ

FIRST TO FIGHT



3966 C-1 RX-501 K-8/64 KOKUSAI





compulsory purchase, arguing that the land seizure was illegal and unconstitutional. Undeterred by either the pending court case or demonstrations, in June 1954 the United States announced a plan to build thirteen warehouses for high explosives. Matsumoto argued that, at a time when the world was moving towards peace, such expansion was not in the interests of the Japanese people. On the contrary, the base should be turned into an international airport, as the city council planned.¹³ On 12 November some 20,000 citizens demonstrated in front of Fukuoka City Hall in protest at the US military presence.

The Fukuoka District court announced its decision on the case brought by Matsumoto on 13 February 1956. His lawyers had argued that the demands for him to allow his land to be used by the US army were against Article 9 of the constitution (the 'Peace Clause') since it was for use as a military facility. Moreover, since the leases were for an unconstitutional purpose their enforcement was invalid as they were contrary to Articles 9 and 98.1 of the constitution and Article 90 of the Civil Code. The court refused to discuss the constitutional issues, but it did rule that since the contracts had not been properly renewed since 1948, the state was allowing use of the land without any legal basis. Therefore, after the end of the occupation the state had no right to use the land. So, 'as well as removing the facility from use by the US army it should vacate it.'¹⁴

This would have provided the basis for Matsumoto and his fellow litigants to refuse to lease the land to the state and the base would have to be closed down. The state argued, however, that it had to fulfil its obligations under the Security Treaty and immediately appealed. Finally, in March 1960 the Court of Appeal supported these arguments used by the state. The Americans continued to plan further developments and in September 1956 they announced they would replace the F86 with a new generation of planes, the F100. These not only had supersonic capability (and were therefore noisier) but also were able to carry small nuclear weapons. There was a new wave of protest that was once more ignored.¹⁵

¹³ *Kaihō Shinbun* 71, 15 September 1954.

¹⁴ Nihon Shakaitō Fukuoka-ken Honbu no 35-nenshi Hensan linkai (Editorial Committee, 35 Years History of the Fukuoka Prefecture Headquarters of the JSP), *Nihon Shakaitō Fukuoka-ken honbu no 35-nen [35 years of the Fukuoka Prefecture headquarters of the JSP]* (Nihon Shakaitō Fukuoka-ken Honbu, 1983), p. 122.

¹⁵ *Ibid.*

McDonnell Douglas F-4C "Phantom II"
USAF Museum Photo Archives





INSTANT



+579T3 A.C



36VV9PRS M180 3140 23 11 1950

不詳標製 建設省地

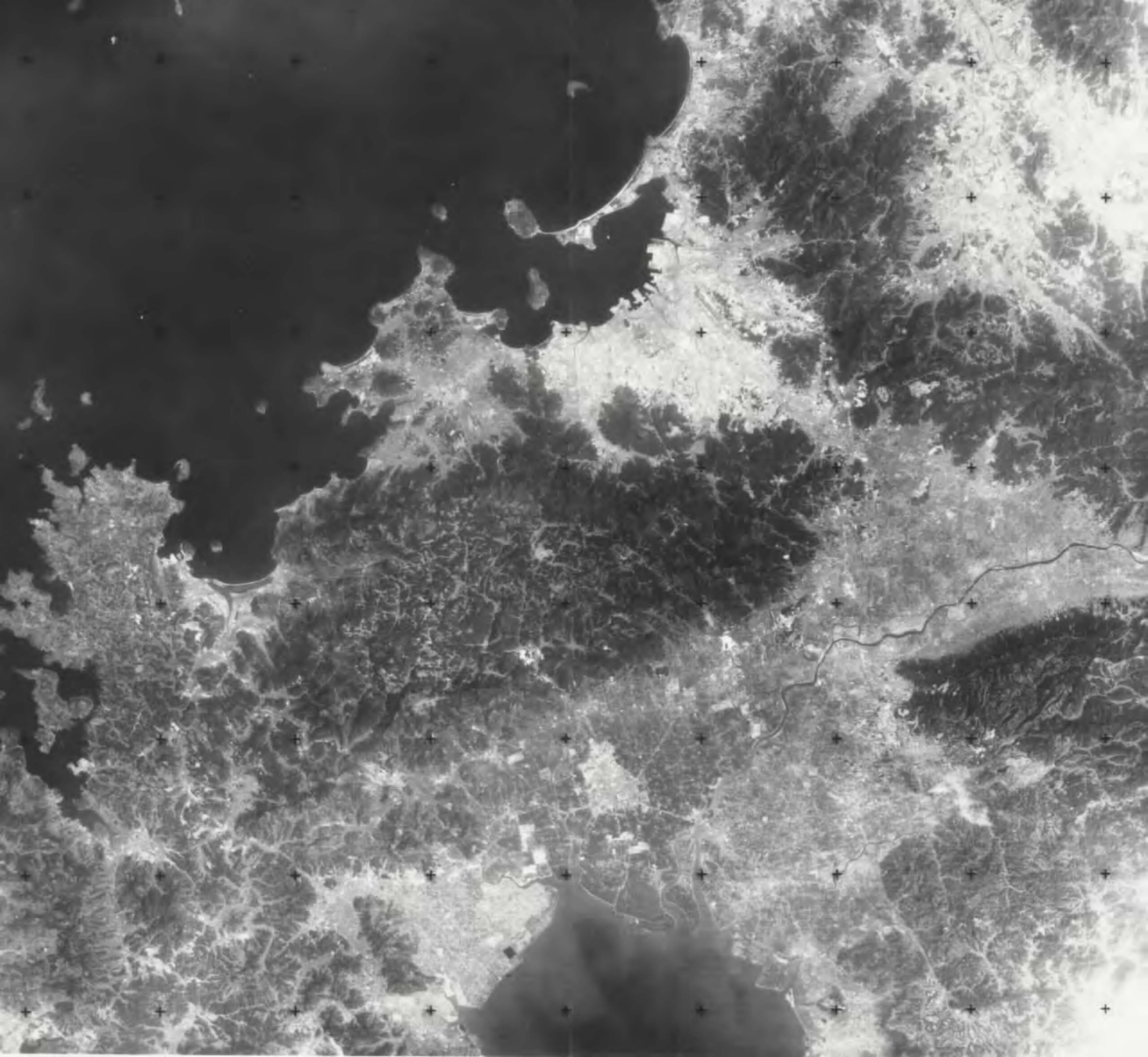




37VV9PRS M180 314CW22 MARK 217

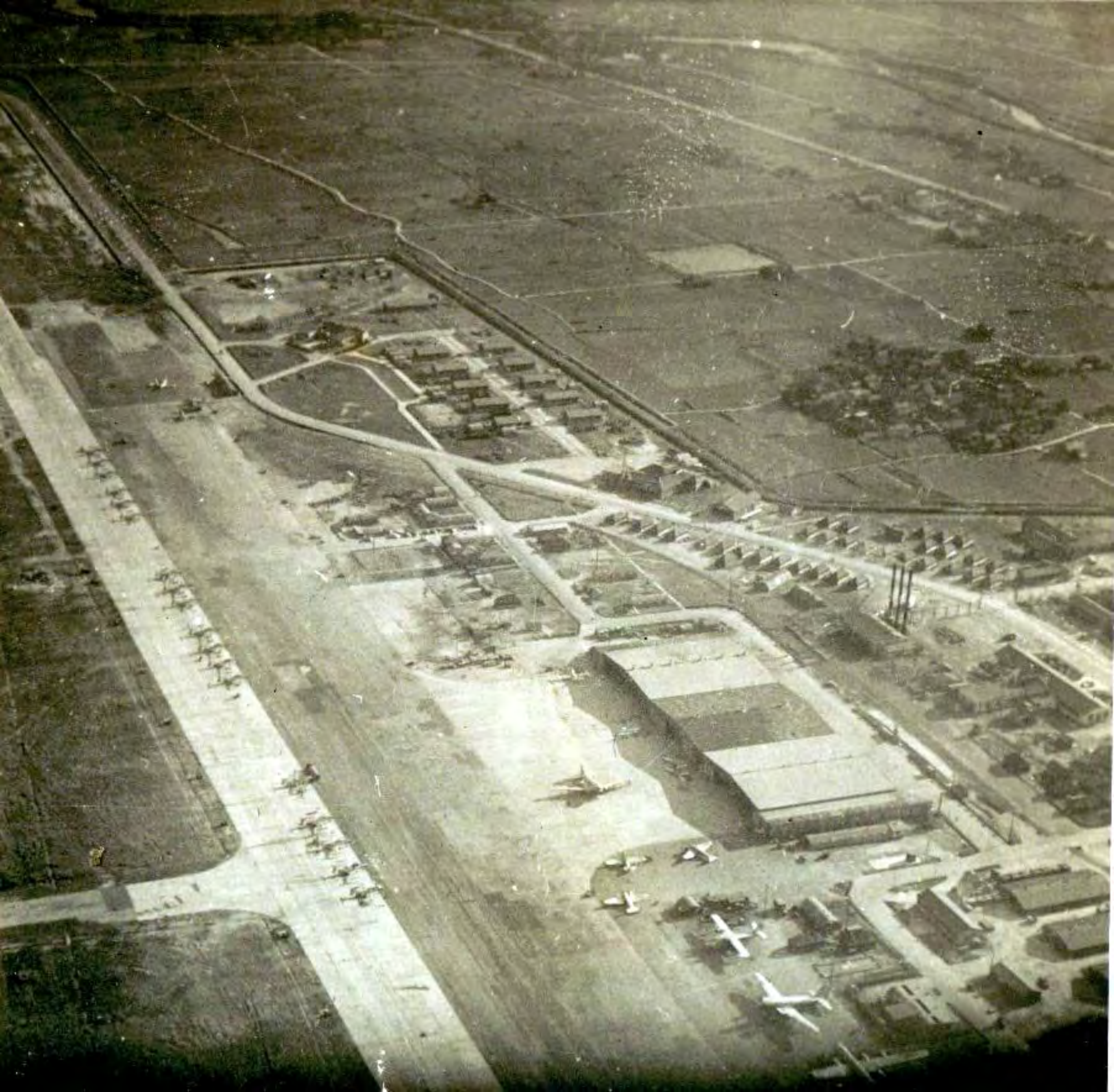
不許複製 建設省地理





4.5"
WIDE





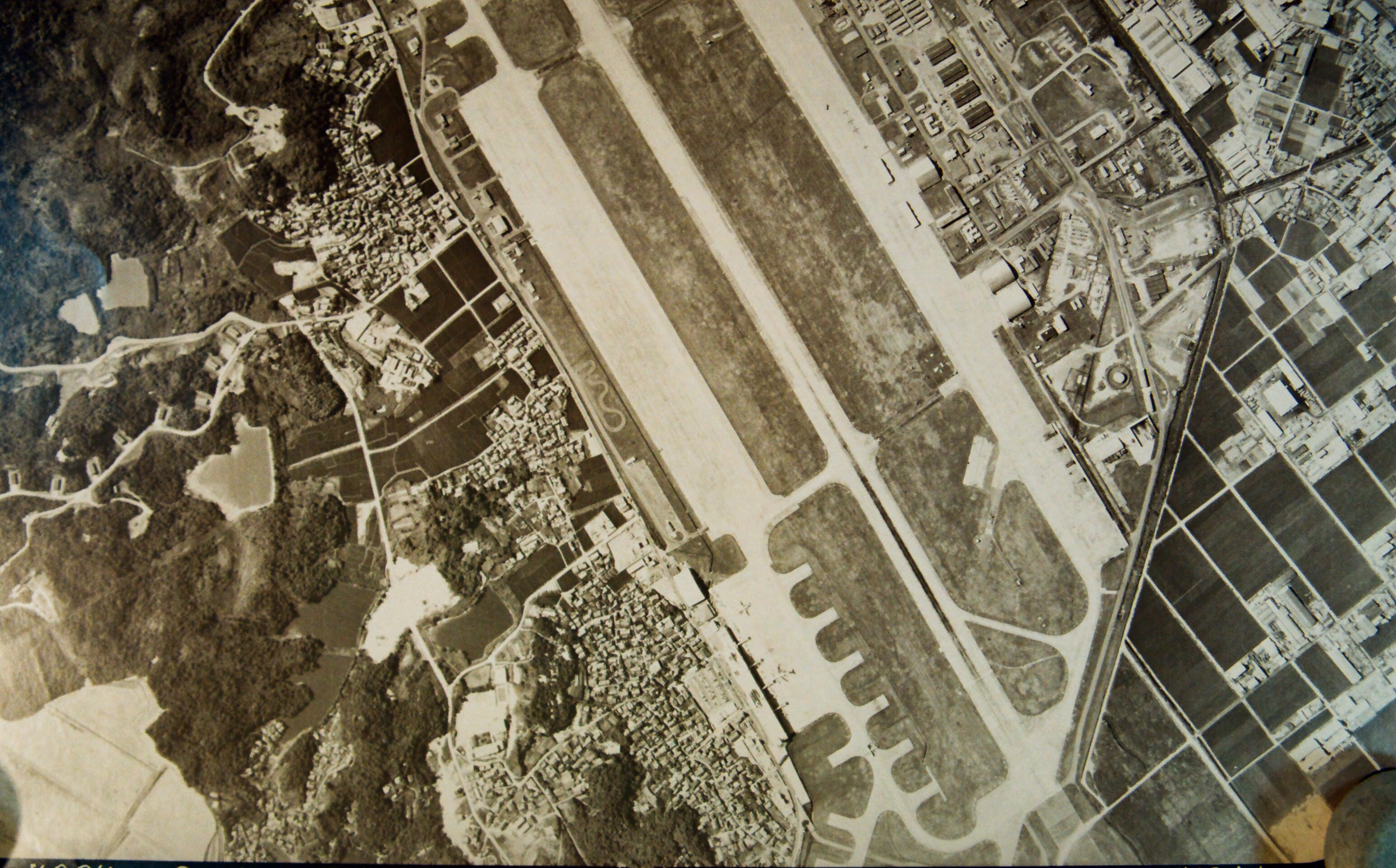


WELCOME
PASSENGER TERMINAL

OCT. 6
PASSENGER TERMINAL

SEE THE
PASSENGER TERMINAL
BUILT BY THE
RAILROADS

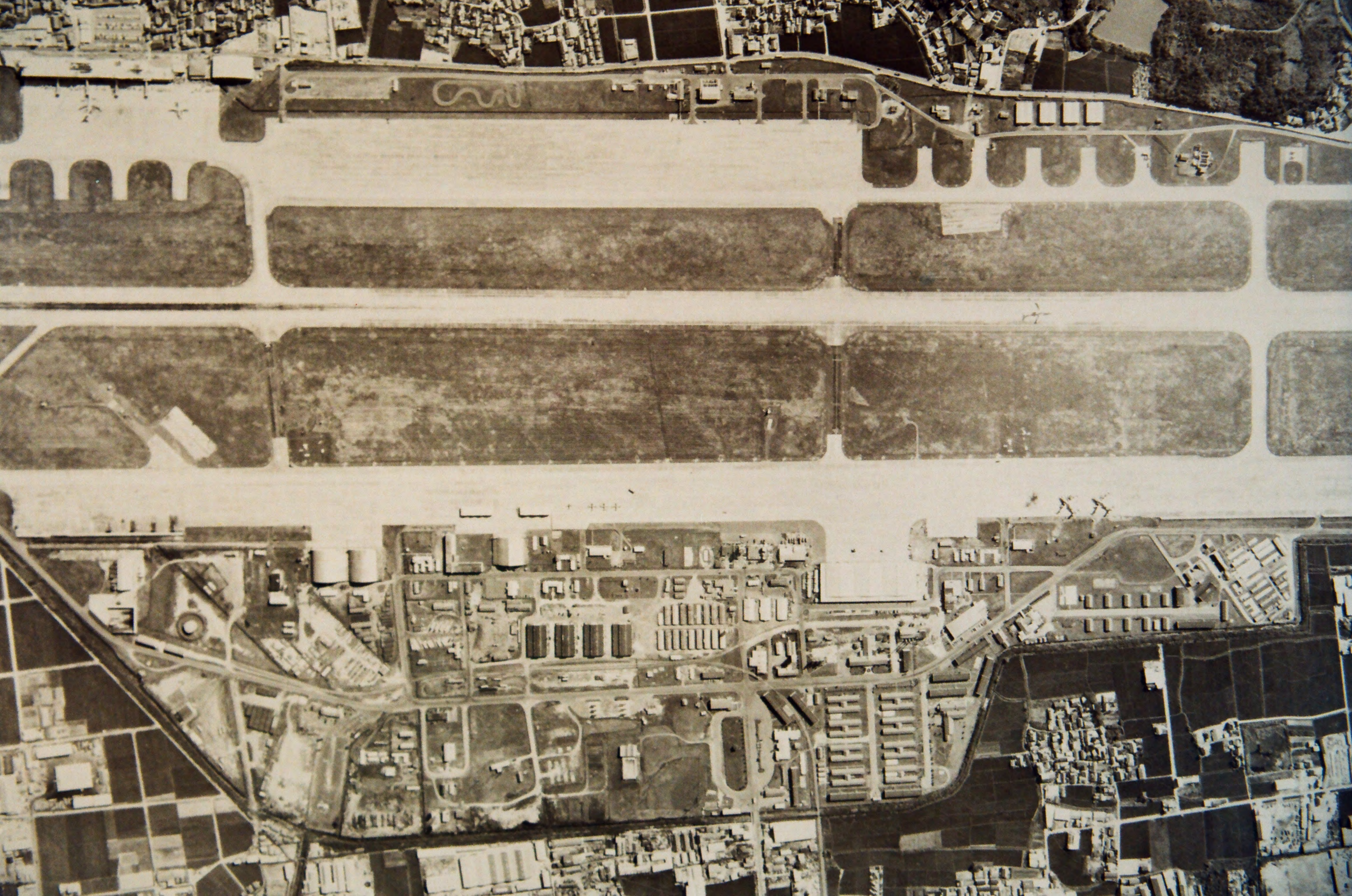


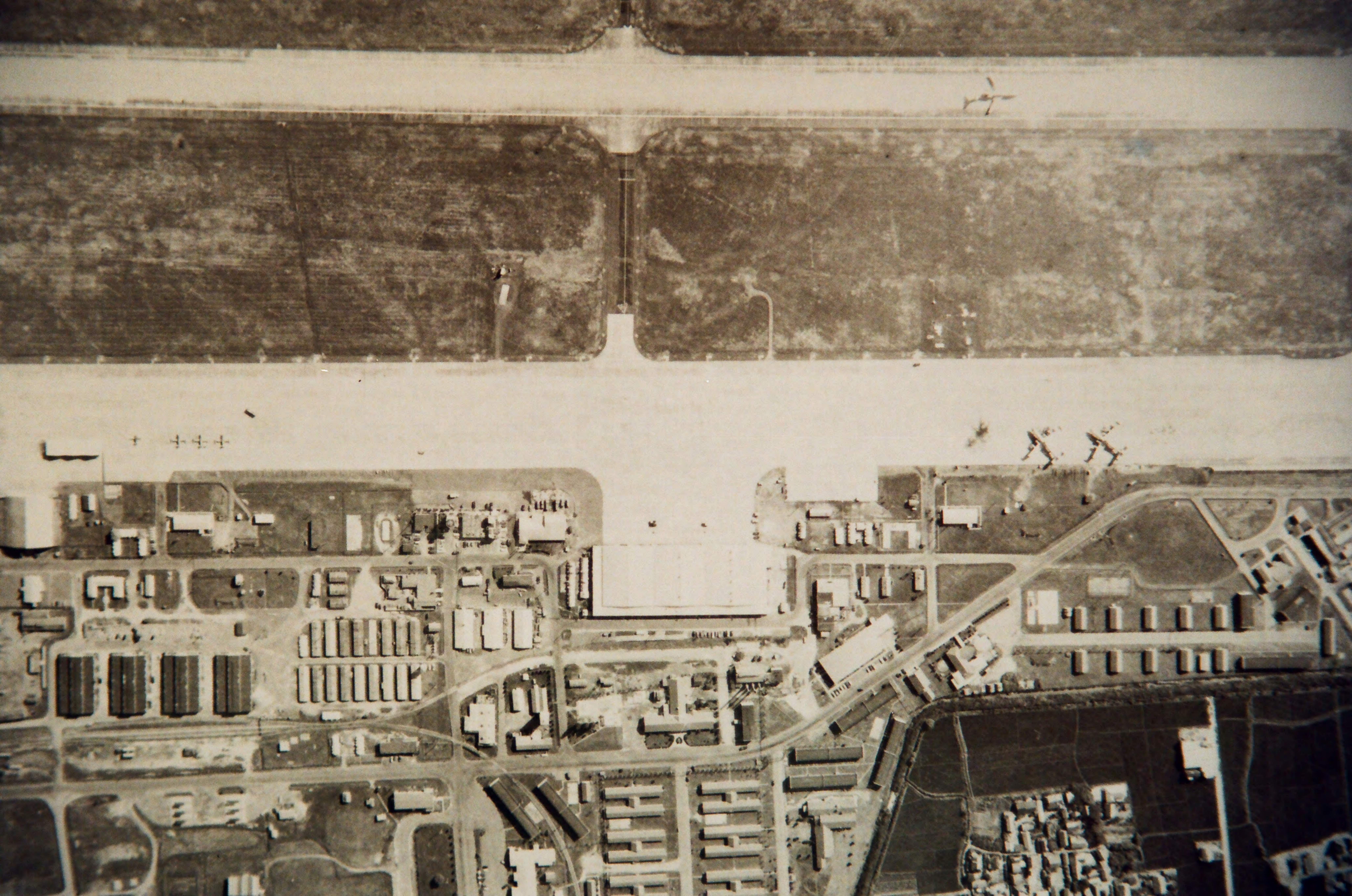


4064 C-4 RX-501 K-8164

KOKUSAI



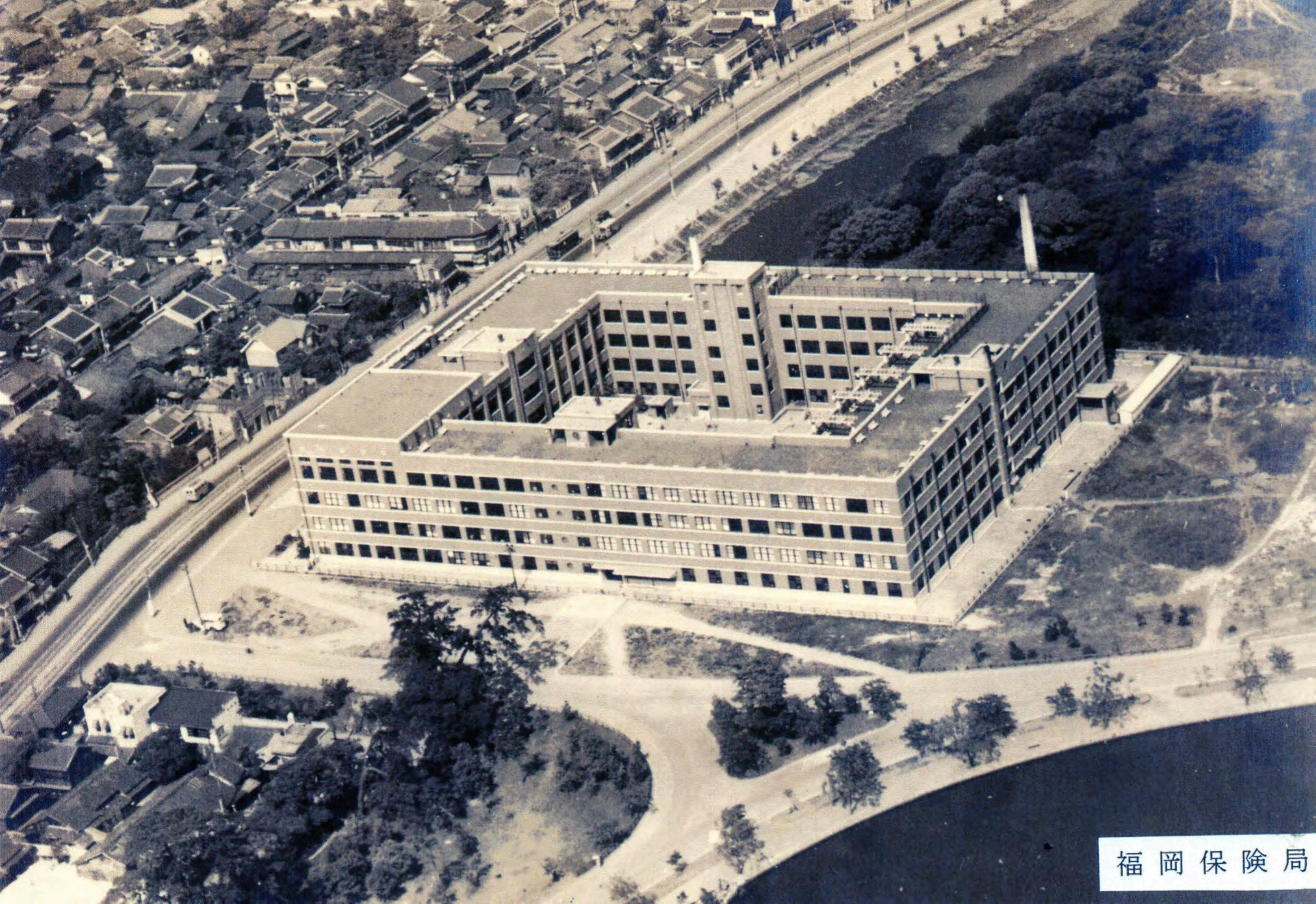












福岡保険局

MY FIRST DEPLOYMENT TO SEA OR TAKE ME TO THE PRINCESS HOTEL

Recalled by Jack Redmond

I completed the F-100 schools at Luke and Nellis in December 1961 and was assigned to the 8th TFW at Itazuke AB, Japan. I was really happy since that was my first choice "Itazuke Tower here I come." I was originally assigned to the 36th TFS, but since I didn't get my cholera shot before reporting to Travis for my flight and was delayed there for a week, (believe me that's another story) I ended up in the 80th. This turned out to be my good fortune. Itazuke was more than I could have dreamed, truly a bachelor's heaven, and there were a bunch of us there. My flight consisted of our married flight commander and the rest bachelors. What a life, great bachelor pads, round-eyed school teachers, Toots (our nickname for Japanese girls), and we were flying the Hun.

All three squadrons had transitioned to the F-105D by early 1964. Those of us that were last to convert really put down the newly converted Hyper Hog/Lead Sled Pilots but were soon praising the capabilities of our new Jet.

The Itazuke Dream couldn't last forever. I remember that historic day in May of 1964 when "Zuke" closed as an active base, the 8th Wing folded, and the three squadrons (35th, 36th, and 80th) flew to Yokota with our wing commander, Col. Chester Van Etten "John Black" leading. But let me tell you the Kyushu Bachelors Association (KBA) threw an "Itazuke Sayonara Party" that will never be forgotten by the many fortunate that attended. What a blast! It floated between the Suinaga, Kiajima, and Zash houses. Two days of great food, drink, and unforgettable people. What memories.

5. Major Construction Missions.

- a. Airdromes. During this operation no airdrome has been constructed. The original Cub Strip at Naval Air Station, SASEBO is now being improved to a 2600' x 100' pierced plank runway. A suitable site has been selected by the 5th Air Force at HISHURUDA (ITAZUKE). Initial construction plans in accordance with the GHQ Construction Policy have been submitted for approval. Preliminary work has been started and complete plans are being prepared to be submitted to SIXTH Army. The work required consists of rehabilitation and additions to Japanese facilities already existing. In addition, preliminary and detailed reconnaissance of sites at OMURA and KUMAMOTO have been made for possible use as B-29 bases.

35th tfs patch 1_eric-site.jpg
35th tfs patch 2_eric-site.jpg
35th TFS patch.gif
DoiMatsuzakiDepot1964-01.JPG
DoiMatsuzakiDepot1964-02.JPG
DoiMatsuzakiDepot1964-03.JPG
f4c-8.jpg
F-100s at Itazuke start 1956-09 - Cobbing.jpg
Fukuoka 8_7_45.jpg
Fukuoka bombed 1945.JPG
Fukuoka Chuo 1947.jpg
Fukuoka map 1961.jpg
Fukuoka Nishi 1947.jpg
Fukuoka satellite photo.jpg
Itazuke AB patch.JPG
Itazuke AFB 1953-01 - Bill Evans.jpg
itazuke japan af base - cpo57.jpg
ItazukeAB1964-01.JPG
ItazukeAB1964-03.JPG
ItazukeAB1964-04.JPG
ItazukeAB1964-06.JPG
ItazukeAB1964-07.JPG
ItazukeAB1964-08.JPG
ItazukeAB1964-10.JPG
ItazukeAB1964-11.JPG
Ohori 118th Station Hospital later PO ins bldg 1936.jpg
Redmond re Itazuke - Red River Valley Fighter Pilots 1992 p37.jpg
VAC2-680_Itazuke_plans_1945-11-30.jpg